

# How to Read your Electricity Meter

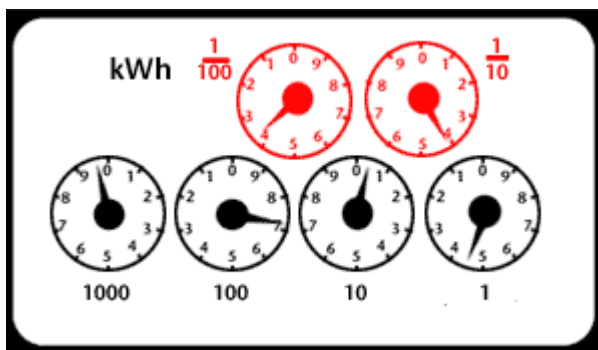
There are four different types of Electricity Meters – dial, digit-dial, digit, and electronic type.

Simply read the Electricity Meter register from left to right, ignoring any number indicated in RED (decimal place).

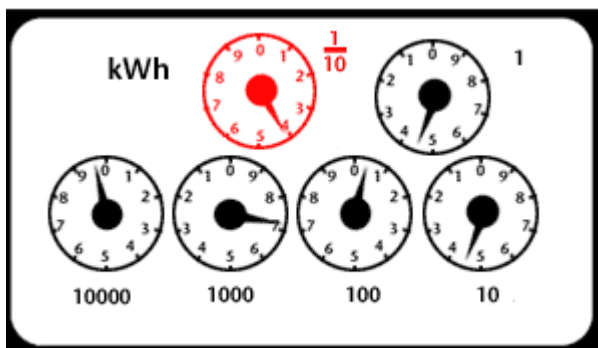
## Dial type Electricity Meters

This type of Electricity Meter shows a series of clock-style dials with numbers from zero to nine. Each dial turns in the opposite direction to the dial before it.

1. To take a Meter Reading, start with the left dial and write down the number indicated by the pointer on each dial, moving towards the right.
2. If the pointer lies between two numbers, record the lower of the two. If the pointer is between nine and zero, record it as nine.
3. Ignore any red dials.
4. Write down your Electricity Meter Number; this is the meter I.D serial number printed on the Electricity Meter's face plate.



The Electricity Meter illustrated above shows a Meter Reading of: 9704

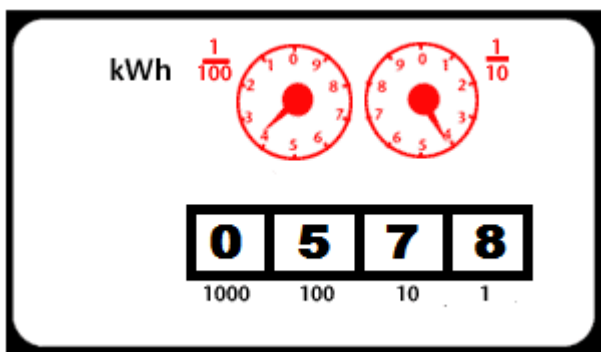


The Electricity Meter illustrated above shows a Meter Reading of: 97044

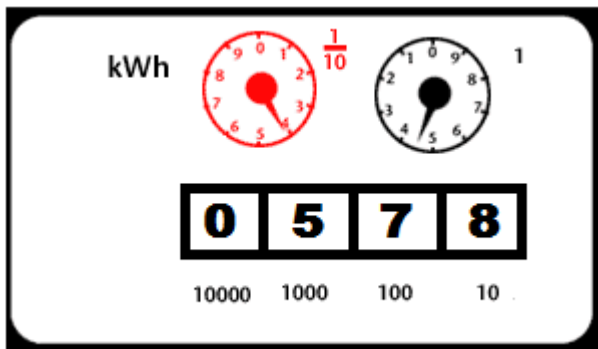
## Digit-dial type Electricity Meters

This type of Electricity Meter shows a series of digits and clock-style dials with numbers from zero to nine.

1. To take a Meter Reading, start with the left digit and write down the number indicated, moving towards the right. If a dial is in black, then write this down as well.
2. If the pointer of the dials lies between two numbers, record the lower of the two. If the pointer is between nine and zero, record it as nine.
3. Ignore any red dials.
4. Write down your Electricity Meter Number; this is the meter I.D serial number printed on the Electricity Meter's face plate.



The Electricity Meter illustrated above shows a Meter Reading of: 0578

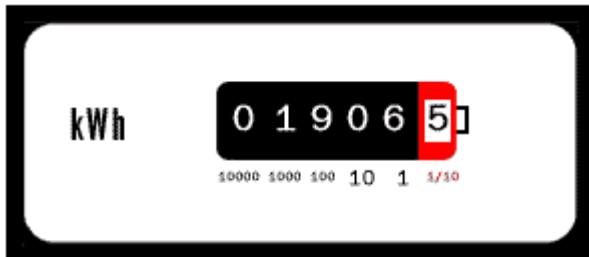


The Electricity Meter illustrated above shows a Meter Reading of: 05784

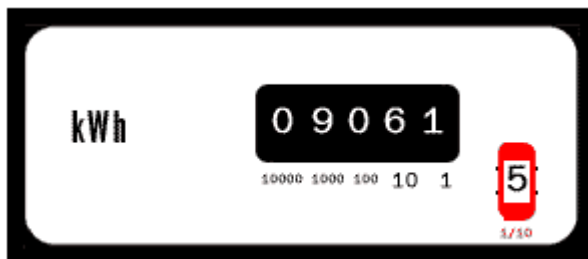
## Digit type Electricity Meters

This type of Electricity Meter shows a series of digits with numbers from zero to nine.

1. To take a Meter Reading, start with the left digit and write down the number indicated, moving towards the right.
2. Ignore any digits in red.
3. Write down your Electricity Meter Number; this is the meter I.D serial number printed on the Electricity Meter's face plate.



The Electricity Meter illustrated above shows a Meter Reading of: 01906



The Electricity Meter illustrated above shows a Meter Reading of: 09061

## Digital LCD type Electricity Meters

This type of Electricity Meter shows a series of digits with numbers from zero to nine.

1. To take a Meter Reading, start with the left digit and write down the number indicated, moving towards the right.
2. Write down your Electricity Meter Number; this is the meter I.D serial number printed on the Electricity Meter's face plate



The Electricity Meter illustrated above shows a Meter Reading of: 019345